

HD Product Specifications

Led control cardHD-U6BN

V2.0 20171116

Overview

For signage, store, outdoor advertising and other information display, HUIDU technology launched our U-disk series control card, for updates the display programs by the USB port.

U6BN is a U-disk series control card, through the USB port to update the program. Cost-effective, simple software to operate, better and rich display effect, supported variety of monochrome display.

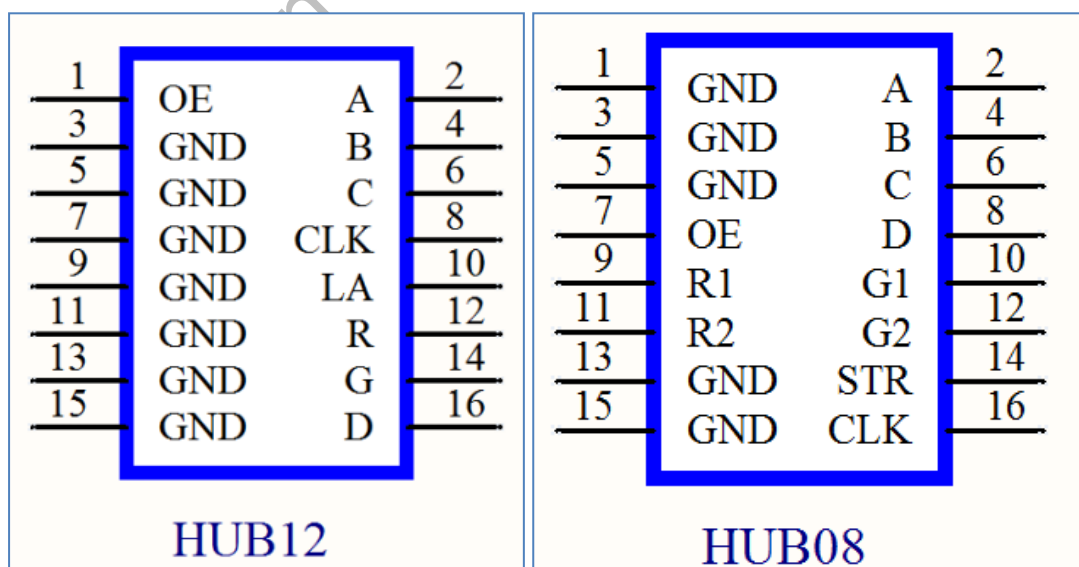
Application software: HD2016.

Features

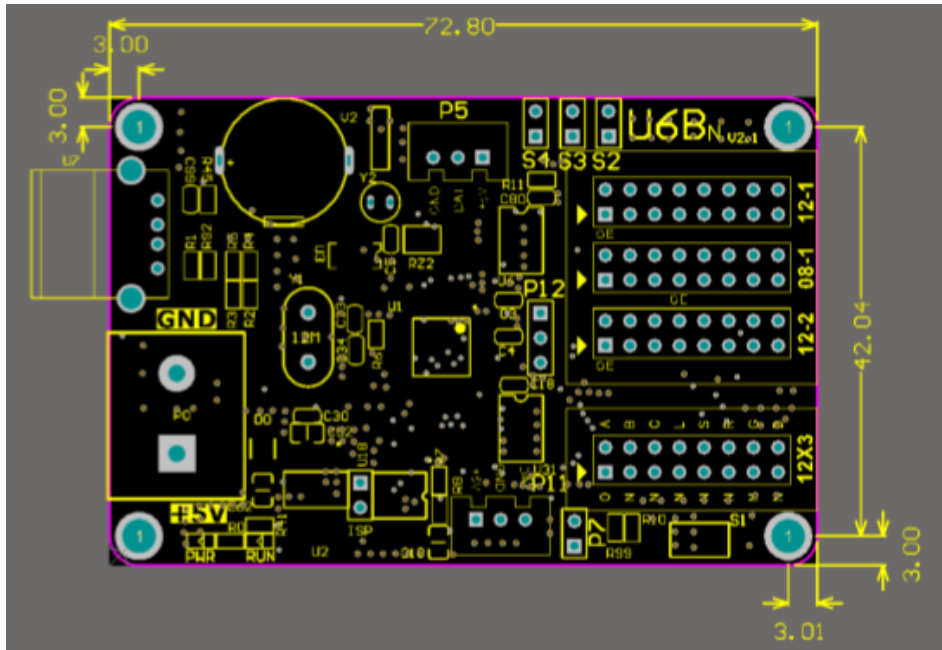
Content	Parameters
Support module	Single color, Various conventional scanning methods
Control range Resolution	Single color: 1024W*48H Dual color: 512W*48H Tricolor: 512W*24H
FLASH Capacity	4M Byte
Communication Port	U-Disk
HUB signal	3HUB12,1HUB08
Program Quantity	1000pcs Programs. also can change program by button or remote if weld sensor (Remoter can select 1-999 Programs)
Area Quantity	20 areas with separate zone, separated special effects and border
Display Showing	Text, Hypertext (GIF、 Picture、 Animation Character、 SWF、 Video),Excel, Time, Count, Digital, Temperature, Humidity, Brightness ,Background etc
display effects	1.Support all languages(Software :HD2016) 2.Support 7 color effects and Gray level (HD-U62/U63/U64) 3. Border functions of Program border, area border and Custom

	<p>design border.</p> <p>4.Add Countdown /Count up, Button Countdown / Count up</p> <p>5.Add Text Rotation of 90° 、 180° 、 270° for display</p> <p>Text function of Hollow、 Stroke etc</p> <p>6.Add payment collection function</p> <p>7.Updated program by U-disk</p> <p>8. More than 200 types showing effects</p>
Clock function	<p>1、 Support calendar, analog clock, lunar calendar</p> <p>2, is timing, countdown display</p> <p>3, display font, size, location, etc. can be arbitrarily set</p> <p>4, support for multiple time zone display</p>
Extended Equipment	Brightness setting by Custom、 Automatic(weld sensor)、 by time period regulation
Automatic switch screen	Support on /off display automatically by time
Dimming	Support two brightness adjustment mode

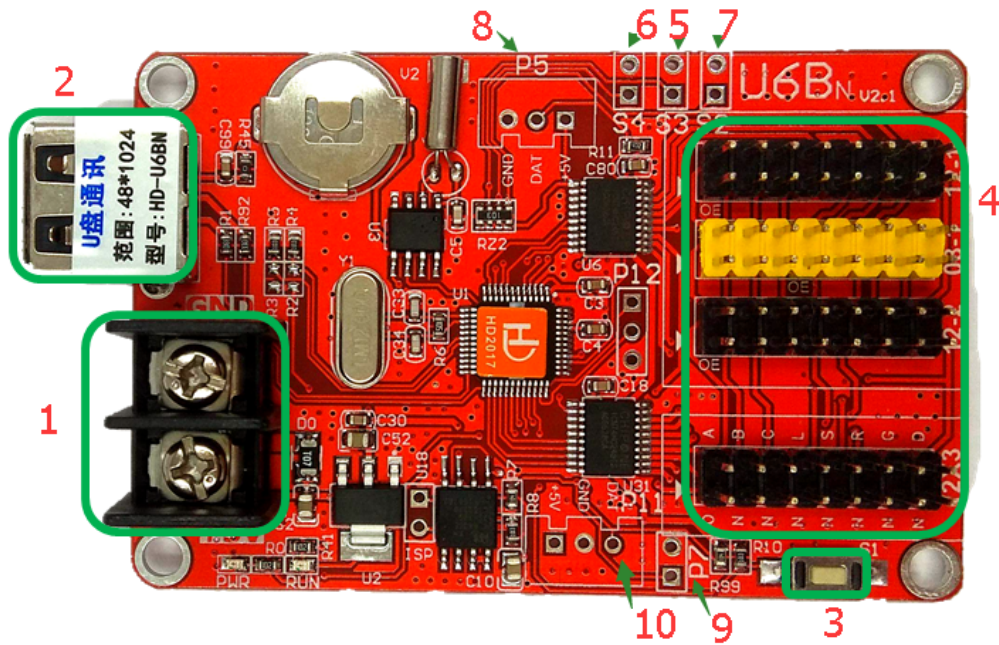
Port Definition



Setup Diagram



HD-U6BN Photo



- ①: Power connector, connect 5V power supply;
- ②: USB ports, Updated program by U-disk;
- ③: Test button, click to switch screen test status;

- ④： 3 HUB12,1HUB08 connect the display;
- ⑤： S3, connect the point switch, switch the previous program, timer reset, count down;
- ⑥： S4, connect the point switch, program control, time-out, count reset;
- ⑦： S2, connect the point switch, switch the next program, the timer starts, count plus;
- ⑧： P5, connect temperature / humidity sensor;
- ⑨： P7, connect the brightness sensor;
- ⑩： P11, connected to the infrared receiver, with the remote control.

Technical Parameters

	Minimum	Typical value	Maximum
Rated voltage (V)	4.2	5.0	5.5
Storage temperature(°C)	-40	25	105
Work environment humidity (°C)	-40	25	80
Work environment humidity (%)	0.0	30	95

Precautions

- 1) To ensure that the control card is stored during normal operation, make sure the battery on the control card is not loose;
- 2) In order to ensure the long-term stable operation of the system, please try to use the standard 5V power supply voltage.