

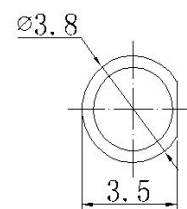
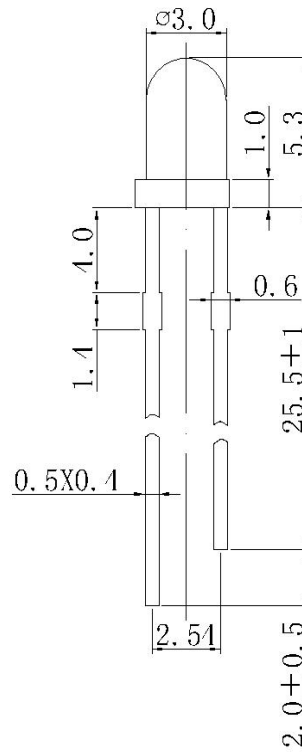


Hubei Kento Electronic Co., Ltd

Specification for LED Product

3BB4HC

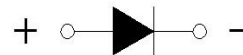
Package Dimensions(mm)



Notes:

All dimension units are millimeters.

All dimension tolerance is $\pm 0.2\text{mm}$ unless otherwise note



An epoxy meniscus may extend about 1.5mm down the leads.

Burr around bottom of epoxy may be 0.5mm max.

Synopsis:

3mm Round Type

Water Clear Lens

Blue LED Lamp



Hubei Kento Electronic Co., Ltd

3BB4HC						
Typical Electrical & Optical Characteristics (Ta = 25°)						
ITEMS	SYMBOL	CONDITION	MIN.	TYP.	MAX.	UNIT
Forward Voltage	VF	IF = 20mA	3	3.2	3.4	V
Reverse Current	IR	VR = 5V	---	---	1.1	μA
Dominant Wavelength	λ D	IF = 20mA	455	---	465	nm
Luminous Intensity	IV	IF = 20mA	2000	3000	4000	mcd
50% Power Viewing Angle	2θ½	IF = 20mA	20	23	26	deg
Absolute Maximum Ratings at (Ta = 25°)						
ITEMS	SYMBOL	ABSOLUTE MAXIMUM RATING				UNIT
Forward Current	IF	50				mA
Peak Forward Current	IFP	220				mA
Continuous Forward Current	IL	20				mA
Reverse Voltage	VR	5				V
Power Dissipation	PD	170				mW
Operation Temperature	Topr	-40 ~ +80				°C
Storage Temperature	Tstg	-40 ~ +80				°C
Lead Soldering Temperature	Tsol	Max.260°C for 5 sec Max.				

IFP Conditions Pulse Width 10msec duty 1/10

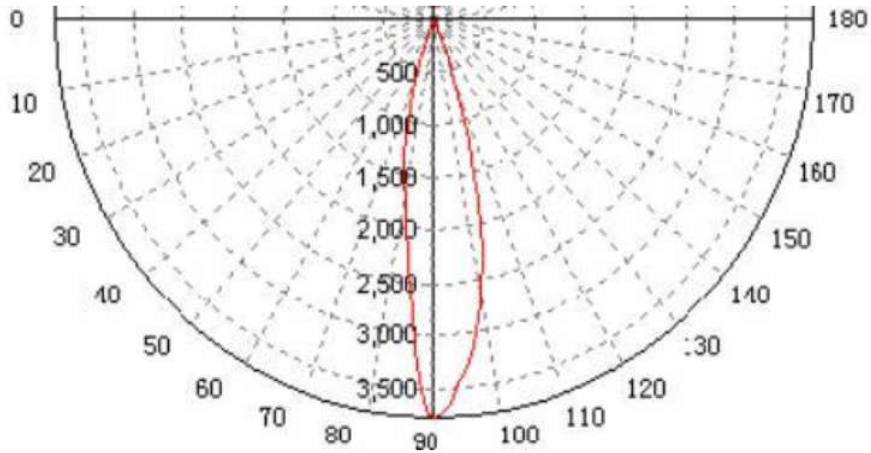
Tsol Conditions 4mm from the base of the epoxy bulb



Hubei Kento Electronic Co., Ltd

3BB4HC

Spatial Distribution



Reliability Performance

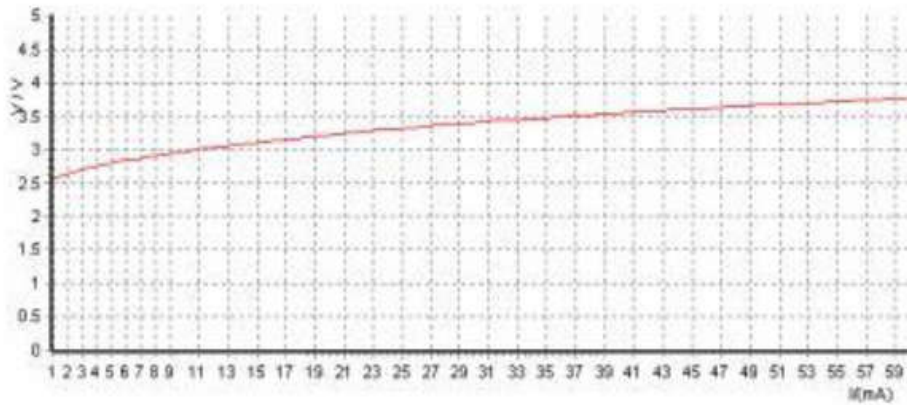
Test Classification	Test Item	Test Conditions	Test Duration	Sample Size	Standard
Life Test	Life Test	Ta=25°±5 IF=20mA	1000 hrs	10PCS	
Environment Test	Thermal Shock Test	-10°±5°←→+100°±5° 5min. 10sec. 5min.	100 cycles	10PCS	
	Temperature Cycle Test	55°C±5°C←→+85°C±5° 30min. 5min. 30min.	100 cycles	10PCS	
	High Temperature C High Humidity Test	Ta=85°±5% RH =85%±0.5 %RH	240 hrs	10PCS	
	High Temperature Storage	Ta=100°±5%	1000 hrs	10PCS	
	Low Temperature Storage	Ta=-55°±5%	1000 hrs	10PCS	
Mechanical Test	Resistance to Soldering Heat	Ta=260°±5%	5 sec.	10PCS	
	Lead Integrity	0° ~ 90° ~ 0°	3 times	10PCS	



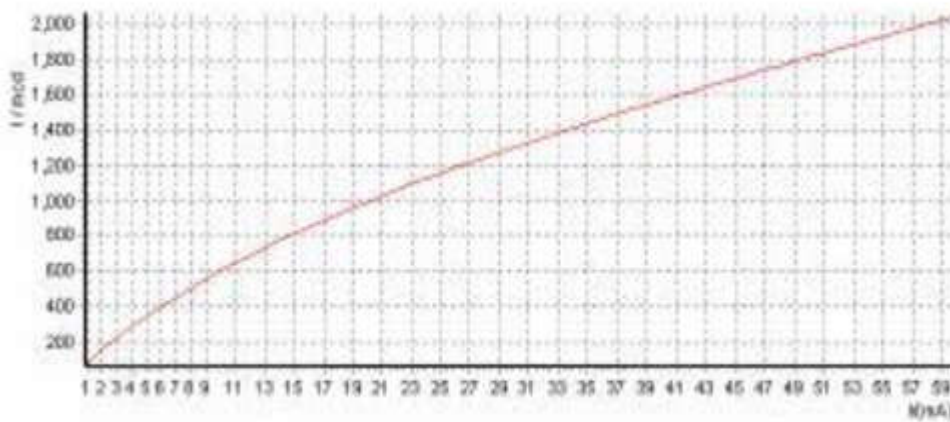
Hubei Kento Electronic Co., Ltd

3BB4HC

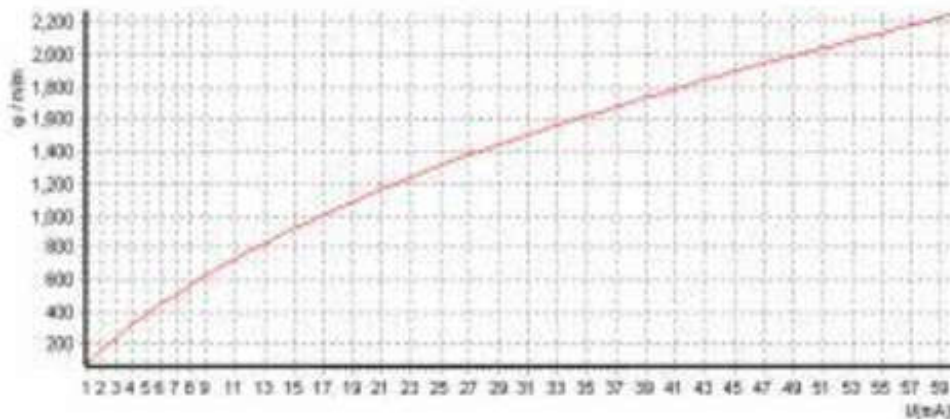
Typical Optical/Electrical Characteristics Curves (Ta=25° Unless Otherwise Noted)



Current-Voltage Curve



Current-Luminous intensity Curve

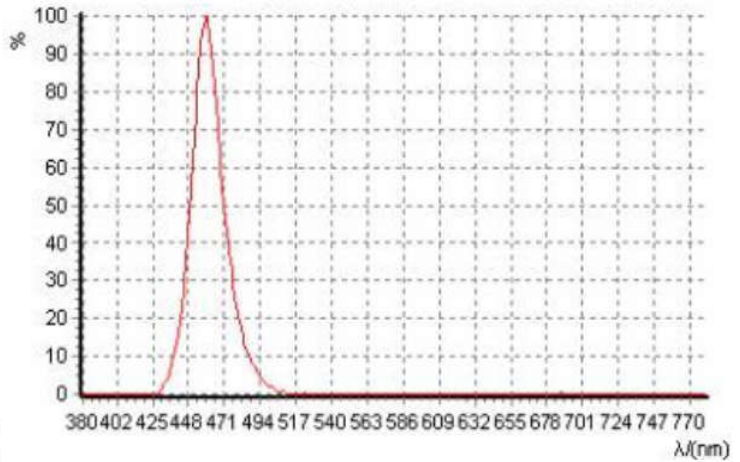
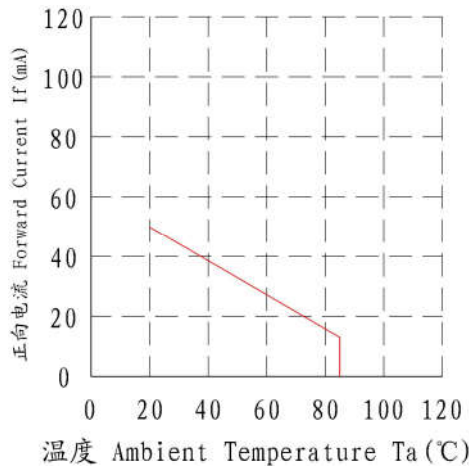


Current-Luminous flux Curve

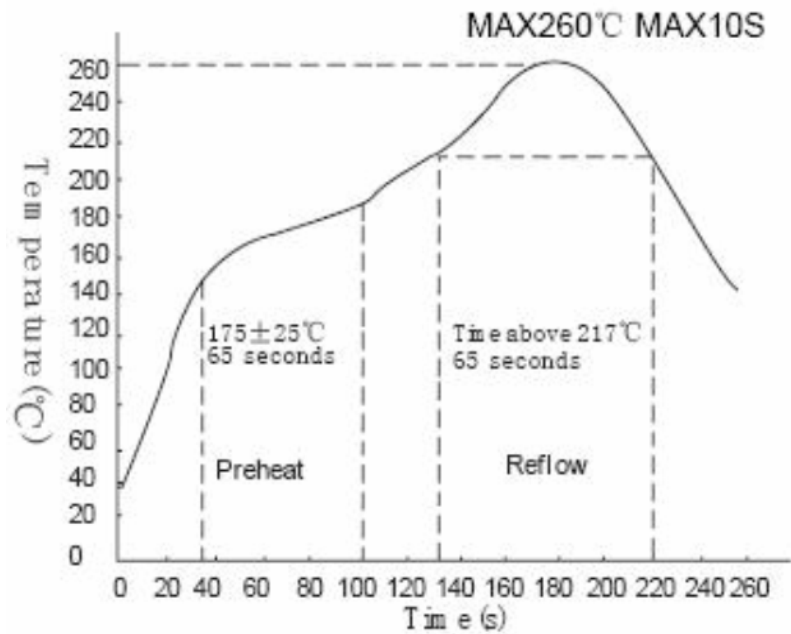


Hubei Kento Electronic Co., Ltd

3BB4HC



Wavelength



Lötterkurve

Handlöten

max. 260° - 5 Sekunden

Wellenlöten

Vorheizen max. 100° - 60 Sekunden

Löttemperatur max. 260° - 10 Sekunden

